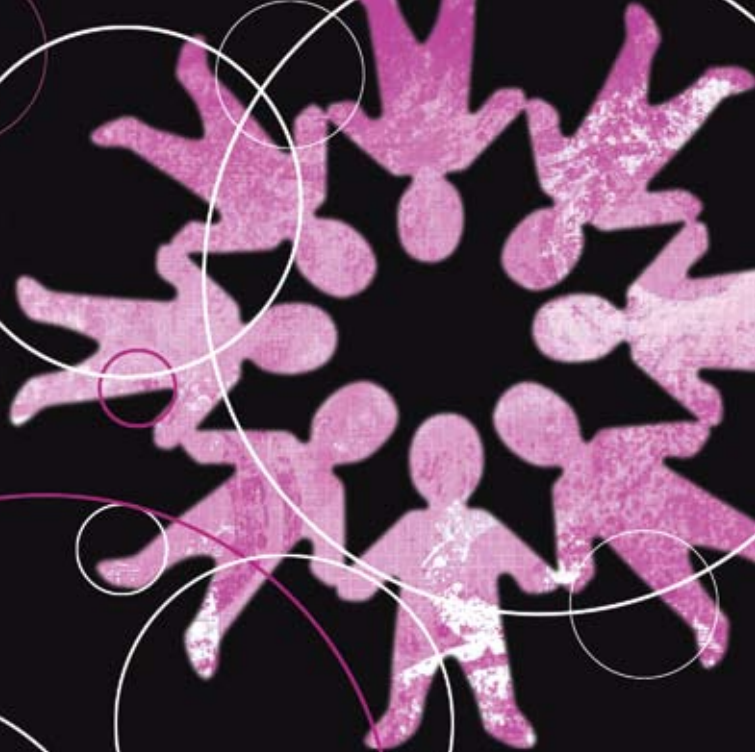
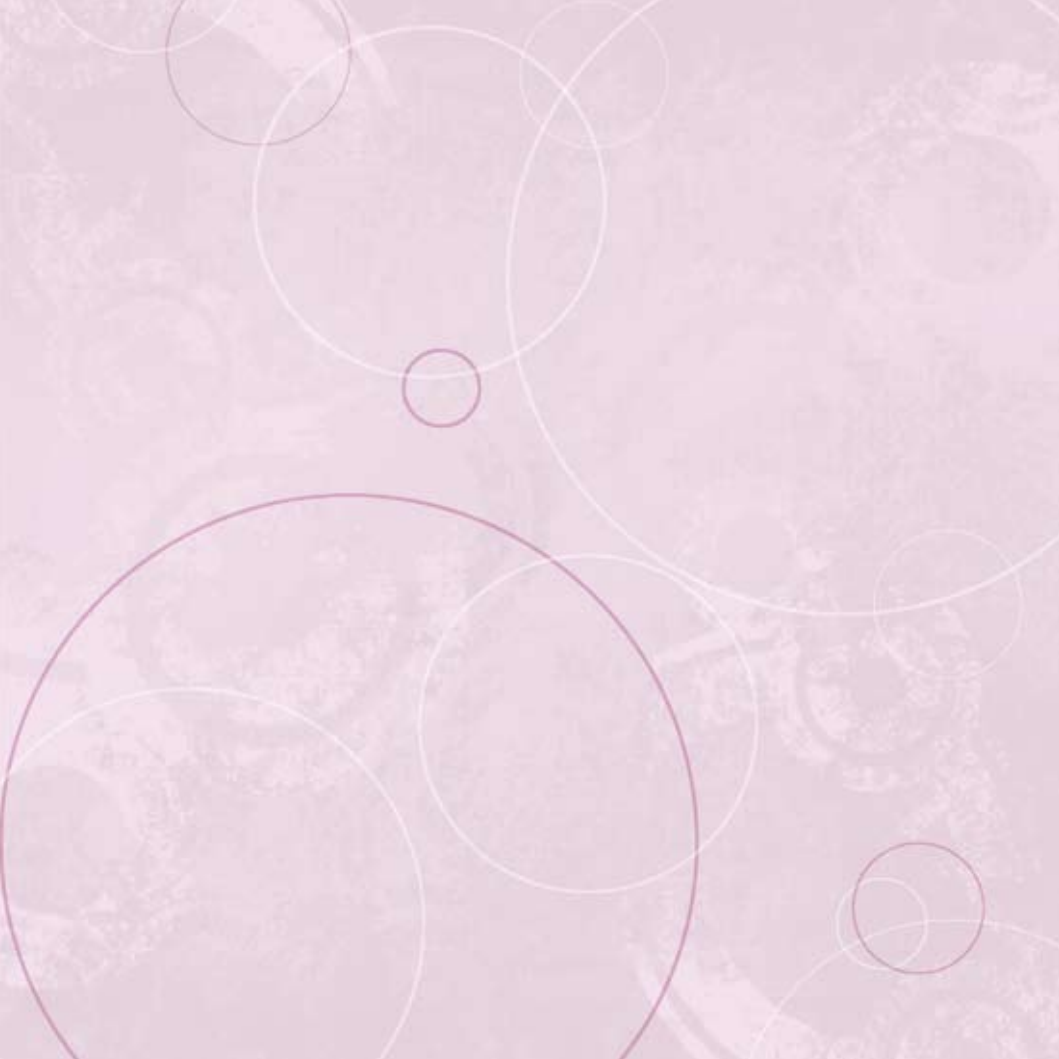


KILDARE COUNTY CHILDCARE COMMITTEE



**EXECUTIVE SUMMARY
STRATEGIC PLAN
2007-2010**



On behalf of Kildare County Childcare Committee I would like to take this opportunity to thank all of our stakeholders who contributed to the preparation of our new Strategic Plan for 2007 - 2010.

FOREWORD

As you will note from this Executive Summary the development of our Strategic Plan took place over an eight month period with the assistance of Exodea Europe and the staff of Kildare County Childcare Committee.

During the preparation of the Plan we listened to the views of many people and organisations that have an interest in childcare including childcare service providers, local elected representatives, state agencies, the social partners, parents and children themselves.

The outcome from these various consultations was that Kildare County Childcare Committee has an important role in County Kildare to ensure that adequate and affordable childcare services are made available and that these services are provided to the highest possible standards.

As a Committee we are acutely aware that the increased population in the county has resulted in a shortage of supply of childcare places both within the private sector and within the community based childcare sector.

It is the intention of Kildare County Childcare Committee over the life of this Strategic Plan to promote childcare provision throughout the county and particularly in areas, which have been identified as disadvantaged in terms of adequate childcare provision.

We look forward to working in partnership with local communities, interested groups and relevant stake-holders to develop new services as well as continuing to support existing childcare providers to ensure that our children and their families have the facilities and services that are required to enable them to develop to their full potential.

In conclusion I would particularly like to thank the members of Kildare County Childcare Committee for their support during the development of this Strategic Plan, Exodea Europe for their excellent work in researching, facilitating and compiling the Plan and the staff of Kildare County Childcare Committee led by Julie McNamara, our Coordinator for their support and direction in managing the preparation of the Plan.

Pat Leogue
Chairperson

FOREWORD

3

**K.C.C.C.
MEMBERS**

Pat League(Chair)
**Representing Kildare Partnerships/
Community Groups**

Marie Faughey (Vice-Chair)
Representing the Health Service Executive

Maria Allison
**Representing the Community & Enterprise
Section
(Kildare County Council)**

Emma Berney
**Representing Kildare Partnerships/
Community Groups**

Margaret Byrne
Representing FAS

Kathleen Cash
**Representing Kildare Private Childcare
Service Providers**

Cllr Frank English
**Representing the County Kildare Vocational
Education Committee**

Mary Fitzpatrick
Representing Kildare County Enterprise Board

Berna Hayden
**Representing the Kildare Community
& Voluntary Forum**

Lilian Joyce
**Representing the National Voluntary
Childcare Collaborative**

Michael Kelleher
Representing ICTU

Debbie Mullen
**Representing the National Voluntary
Childcare Collaborative**

**K.C.C.C.
MEMBERS**

5

**K.C.C.C.
MEMBERS**

Debbie Ormiston
**Representing the Kildare Community Childcare
Service Providers**

Mary Waters
Representing the Irish Farmers Association

Staff

Julie McNamara
Co-ordinator

Fidelma Martin
Development Worker

Marianne Casey
Community Development Worker

Alison Kelly
Administrator

Emily Moore
Assistant Administrator



Executive Summary

This Strategic Plan 2007 - 2010 provides the framework in which Kildare County Childcare Committee will develop its operations going forward.

It will be implemented under the New Childcare Investment Programme 2006-2010 (NCIP) which aims to deliver quality early childhood care and educational services centred on the needs of the child.

The plan was developed over an eight month period and is informed by an extensive review, needs analysis, consultation process with all key stakeholders including children, and the aims and objectives of the NCIP (2006- 2010).

Kildare County Childcare Committee has decided on the following mission statement, vision and values.

2.1 Mission, Vision and Values

2.1.1 Mission Statement

To promote quality and accessible childcare provision for all children from birth to 14 years in Co. Kildare in partnership with all stakeholders.

2.1.2 Vision

By 2010 Kildare County Childcare Committee will be recognised as the coordinating body of childcare throughout County Kildare, providing advice, advocacy, support and a child-centred approach to the provision of quality childcare in Kildare.

2.1.3 Values

Kildare County Childcare Committee values:

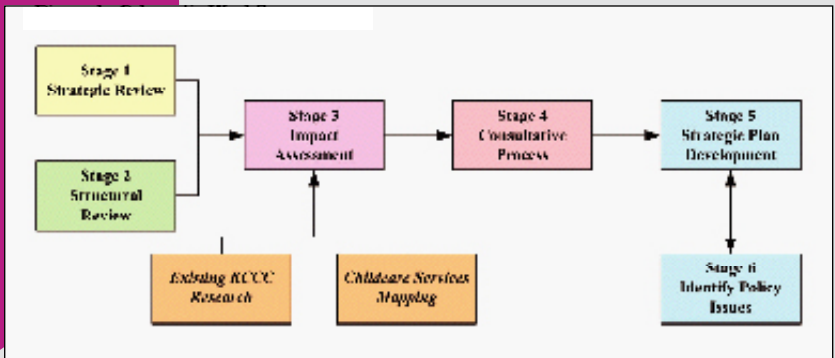
- ❑ The rights of children.
- ❑ Partnership, collaboration and volunteerism
- ❑ Parents' rights to an informed choice.

- The role of quality early childhood care and education in strengthening families, communities and society.
- Equality of opportunity.

2.2 Methodology for developing Strategic Plan 2007-2011

Figure 1 - Schematic Workflow

Kildare County Childcare Committee undertook



a comprehensive and detailed evaluation, needs analysis, consultation process and strategic planning in the development of this strategic plan.

Specific elements included:

- ❑ A detailed childcare needs analysis;
- ❑ A strategic evaluation of KCCC;
- ❑ A structural evaluation of KCCC;
- ❑ An assessment of the impact to date of KCCC;
- ❑ Previous research carried out by KCCC
- ❑ Consultation with members, staff, children, stakeholder organisations and childcare service providers; and
- ❑ Submissions from interested parties.

**EXECUTIVE
SUMMARY**



Strategic Objectives

2.3 Strategic Objectives

Following the consultative process, strategic mapping, needs analysis and the planning process with KCCC the following strategic objectives were agreed by the committee:

2.3.1 Strategic Objective 1 Training and Support

- Identify training needs and coordinate an inter-agency response to meet those needs and to promote and facilitate professional development opportunities where appropriate.

2.3.2 Strategic Objective 2 Information/Outreach

- Communicate message of KCCC to all stakeholders in the county becoming recognised and respected as the voice of and action-taker on childcare.

STRATEGIC
OBJECTIVES

12

OBJECTIVE

- Using an inter-agency approach, gather, disseminate and use information to influence change.
- Optimise the capacity of KCCC to deliver on its mission and strategic objectives.

2.3.3 Strategic Objective 3 Childcare Service Provision

- Increase supply and enhance quality of childcare services in the county based on the identified physical needs, the special needs of minority groups, travellers & ethnic groups, and the needs of school age children and with reference to previous research KCCC aims to:

- Increase supply and enhance quality of all integrated community based childcare services and

- Increase supply and enhance quality of childcare services in the county.

- Increase linkages with and information provision to childminders and increase the quality of childminding services.

- ❑ Conduct ongoing research in order to maintain accurate and timely data for the purpose of ongoing needs analysis.
- ❑ Ensure that all service provision respects the requirements and dignity of children with special needs.

2.3.4 Strategic Objective 4

Building the Capacity of Kildare County Childcare Committee

In order that KCCC can position itself to promote quality and accessible childcare provision for all children in County Kildare in partnership with all stakeholders, the organisation will need to constantly grow and change. In particular the organisation will need to invest in the volunteers and staff, which are intrinsic to the development of the organisation.

- ❑ Provide training and capacity building for all staff and committee members.
- ❑ Ensure high standards of governance and management.

**STRATEGIC
OBJECTIVES**

2.3.5 Strategic Objective 5 Research and Development

15

STRATEGIC OBJECTIVES

Research has provided the basis for much of the development work of KCCC since it's inception and it is envisaged that this will continue for the duration of the NCIP.

Kildare County Childcare Committee recognise the importance of regular review and monitoring of its actions as part of a feedback loop in controlling the progress of the organisation. The committee will evaluate the impact of its objectives, strategies, processes and target accuracy.

OBJECTIVE This will be undertaken systematically by objective and by action within each objective.

The Committee further propose to implement the following measures to enable this to take place efficiently:

- ❑ Publicise an annual report by way of a Year End Activity Review
- ❑ Undertake evaluation of every action at the practical completion of each major initiative
- ❑ Use annual action plans to implement the Plan, which clearly link actions to the core objectives
- ❑ Review these plans internally on a quarterly basis by the Committee and on an annual basis with Pobal.

STRATEGIC OBJECTIVES



Overview of Needs

2.4 Overview of Needs

2.4.1 Overall Need

In the ten-year period 1996 to 2006 the population of Kildare has grown by 38%. Kildare's current population growth rate at 13.5% has slowed slightly since 2002; nevertheless it remains well in excess of the 8.1% increase for the State. Kildare is now the third fastest growing county, with only Meath (21.4%) and Laois (14%) growing faster.

Population predictions in 1999 estimated that the number of children under 14 would reach 37,606 by 2016.

This has been exceeded significantly as currently (Census 2006) there are already 43,098 children under 14 in the county.

**OVERVIEW
OF NEEDS**

This is largely explained by the increases in Net Migration rates over the 10 year period of 1996 to 2006.

The number of childcare places as a percentage of the population aged 0-14 averages 9.5% for County Kildare. For each DED and Electoral Area falling below this average, a projection has been made of the number of additional places, which would be required in order to meet that average. Furthermore the CSO's projected growth rate of 2.2% has been applied to the existing numbers of places in all DEDs over four years in order to project the number of additional places which would be required to keep pace with this growth rate.

Projection 1 Baseline

1,675 new places and 93 new providers

Rationale:

The 2.2% annual population growth rate for the mid-East Region.

The findings of a sample of 69% of all providers in relation to current levels of provision.

An assumption that the number of children on waiting lists reflects true demand for childcare service provision.

Includes the current net waiting list

Projection 2 Extrapolated

2,428 new places and

135 new providers

Rationale:

An adjustment has been made to extrapolate the demand projections from a 69% sample to 100%.

**OVERVIEW
OF NEEDS**

Projection 3 Strong growth ***5,779 new places and 299 new providers***

Rationale:

This projection is based on an assumption that the childcare demand growth rates will be of the same order experienced in the period 2001-2006 – i.e. 191%. This assumption is reasonable because the childcare demand indicators for the 2006-2010 are of a similar magnitude to the previous planning period. There is no indication of a fall off in growth levels. Previous growth projections have been proven to be inadequate. For example, by 2006 the projected population levels for 2016 for Kildare had been exceeded.

2.4.2 Scenario selected by KCCC

For the purposes of this strategic plan, Projection 2, for growth at 2.2% extrapolated from a 69% sample to 100%, is being taken as the basis for all projections going forward.

While it is recognised that this may be a somewhat conservative projection given that past population growth has significantly exceeded projections, it is nevertheless the most reliable form of measurement to select, given that it is based upon the CSO projections and it involves the minimum level of assumption. It also lends itself best to the consistency of future planning exercises.

**OVERVIEW
OF NEEDS**

Figure 3 - Future Needs by Electoral Area and type of service

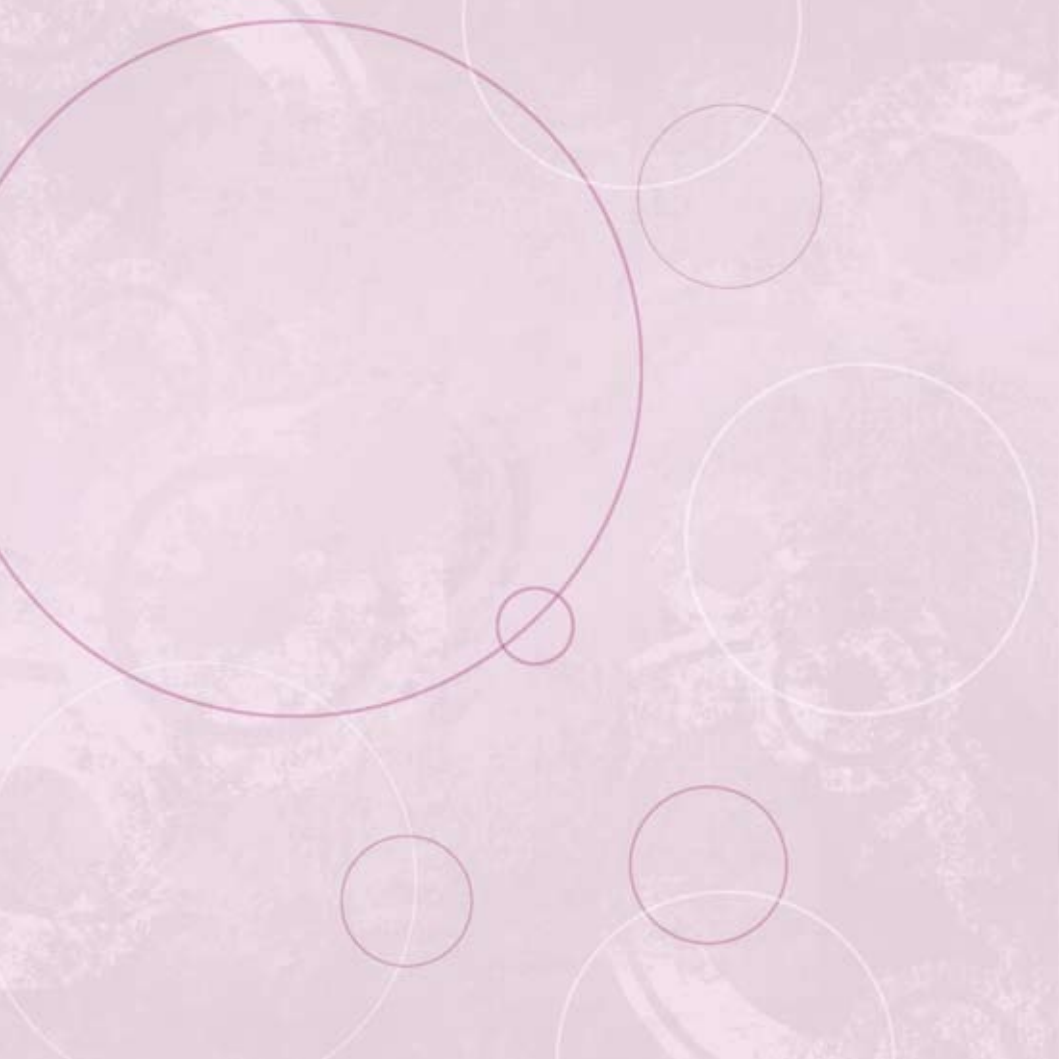
	All Places	All Services	Sessional Places	Sessional Services	Part Time Places	Part Time Services	Full Time Places	Full Time Services	Places Ages 0-4	Services Ages 0-4	Places Ages 5 - 14	Services Ages 5 - 14	Community Services at 45:55 ratio:14
Athy Rural	504	28	239	21	35	6	120	14	264	19	93	25	16
Athy Area	109	6	58	4	13	1	49	4	81	7	17	4	2
Celbridge	995	55	454	30	195	6	194	9	513	27	190	10	16
Edenderry	217	12	54	3	0	0	0	0	98	5	0	0	7
Naas Urban	157	9	83	7	25	1	47	2	124	7	29	1	4
Naas Rural	446	25	259	19	53	4	105	5	355	20	80	4	17
TOTAL	2,428	135	1146	85	321	19	515	341	435	86	409	44	62

2.5 Demand for Community Services

Currently there are 21 community service providers across the county. Community Service Providers represent 10.24% of all services.

There is strong evidence that the current ratio of community services representing 10.24% of all services does not meet the needs in the county. The national NCIP target is for 45 community services to every 55 private services. Relative deprivation indicators coupled with growth patterns indicate that a similar ratio is needed in Co. Kildare.

OVERVIEW OF NEEDS





Transforming Ireland



FUNDED BY THE IRISH GOVERNMENT UNDER THE NATIONAL DEVELOPMENT PLAN 2007-2013



National Development Plan 2007 - 2013

